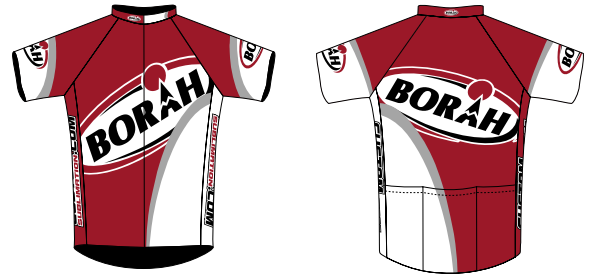




Thank you for choosing CustomSublimation.com for your custom jersey design. We have compiled this document to ensure your design process goes smoothly and quickly with our Art Department.

On the following pages, you will find Design Templates for you to use and create your custom design, along with explanations of our margins and design policies. If you have any further questions regarding your design, please don't hesitate to contact our friendly Customer Service Department at 1-800-354-2825.

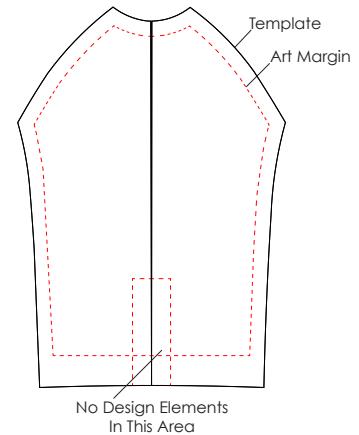
Men's Short-Sleeve 18" Hidden Zipper



Art Margins:

Each piece of your custom jersey design has an Art Margin associated with it. These margins indicate an area that has been reserved for sewing during production of your jerseys.

For this reason, Foreground Art (such as logos, text, etc.) is not allowed to exceed these margins. Background Art (secondary design elements, backgrounds, etc.) is allowed to encroach these areas, but it is important to note that a portion of these areas will be cut off and/or sewn up in production.



Zipper Margin:

Our 18" Hidden Zipper is a great way to circumvent the design limitations of the 7.5" Exposed Zipper. The Hidden Zipper allows for more prominent Front And Center logo placement on the jersey front panel without interruption.

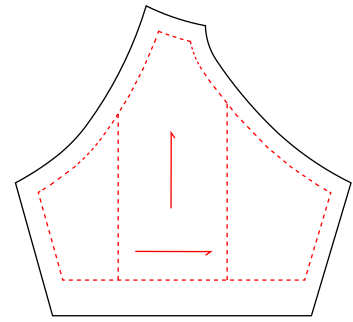
When using the 18" Hidden Zipper option, however, all design elements must be kept out of the area where the zipper comes to an end. The Art Margin on the lower portion of the jersey front panel denotes this area.

With the best possible product in mind, it has become policy not to allow text or other Foreground Art to be placed in this area.

Sleeve Margins:

The sleeve panels of your jersey have an extra margin associated with them. It is located in the direct [optical] center of the sleeve, and its purpose is to ensure that your sleeve art is visible when the garment is worn.

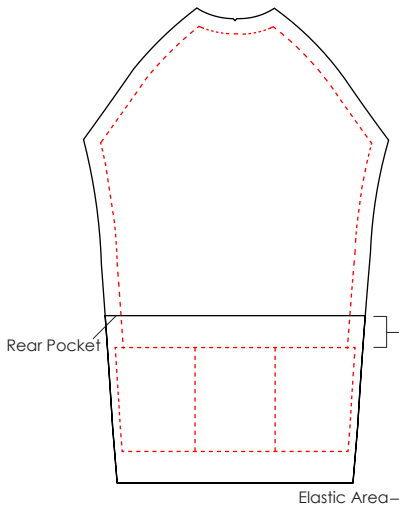
If logos and/or text are placed in these areas, and are too wide, we have found that the artwork will wrap around the arm, causing the artwork to become difficult or impossible to read while worn.



Pocket Margins:

Artwork is allowed to continue from the rear panel of your jersey onto the pocket. It is important to note, however, that a portion of the design may be lost in the area where the elastic of the rear pocket is sewn in. The area most affected by this is in-between the pocket margin and the top of the pocket (the black line on our Design Templates).

The rear pocket of your jersey will be sewn into three separate pockets. For this reason, it is important to note that stitching will run through the areas designated by the Margin on our Design Templates. While you may choose to have design elements run through those areas, in doing so, you are giving your approval to allow stitching to run through your design.



A Note About Raster Artwork:

While we do allow raster artwork to be used in your custom jersey design, there are a few stipulations regarding such use:

Size/Resolution:

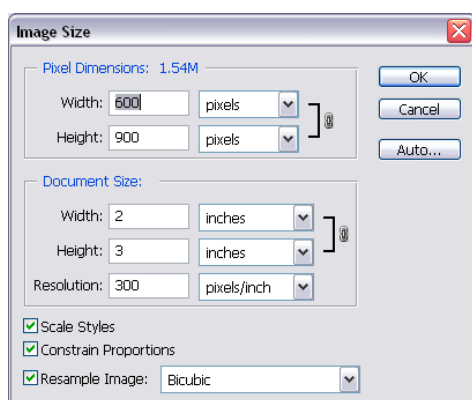
To ensure a quality product, we require all raster artwork to be sent to us at 100% of the final size it is to be used on your design, with a resolution of at least 150 D.P.I.

For instance, if your logo is 2" x 3" @ 72 D.P.I., and you wish to use the logo with a final printed size of 4" x 6", we will not be able to use that file.

If your logo is 2" x 3" @ 300 D.P.I., however, we would then be able to use your file at a size ranging from the original 2" x 3" to 4" x 6" with acceptable results.

File Preparation:

Because our Design Templates are shown at a percentage of actual size, we ask that when you design using raster art, please design your jersey to fit our scaled down Design Template, and send us your raster art at full size and resolution separately. Doing so will ensure that your raster art will be usable, and the quality will not be ill-effected by compression or downsampling.





Customer ID: _____
 CSR: _____

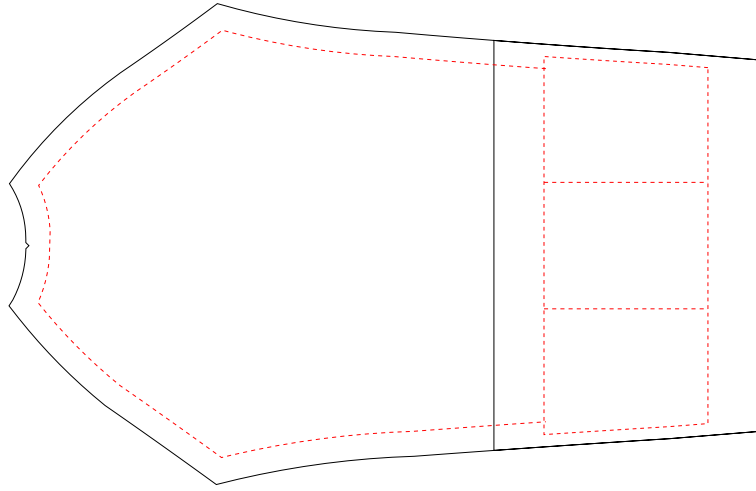
NOTE:

Please extend background artwork slightly beyond template lines.

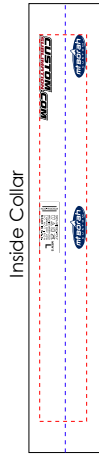
Please keep all logos and text (foreground artwork) within the art margins.

Art Legend

Template	
Art Margin	
Art Read Direction	

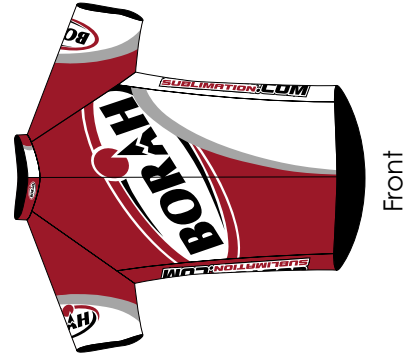


Jersey Back
w/ Rear Pockets

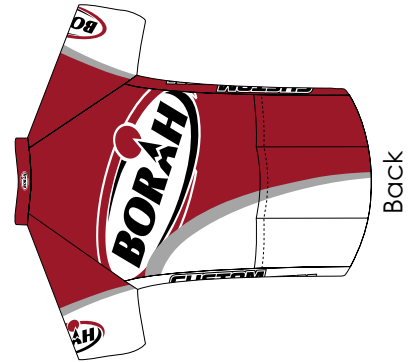


Inside Collar

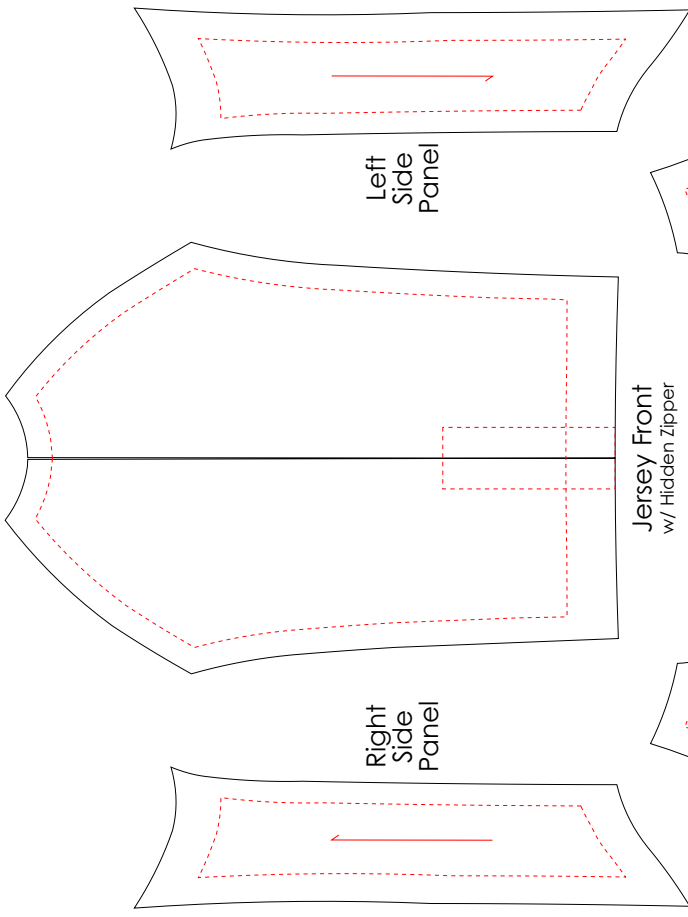
Outside Collar



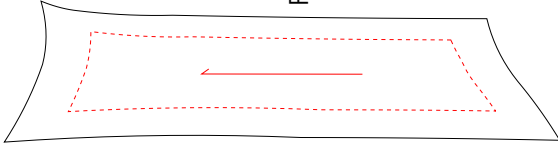
Front



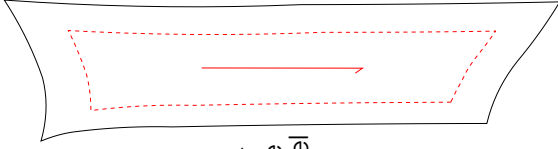
Back



Jersey Front
w/ Hidden Zipper



Right Side Panel



Left Side Panel



Right Sleeve



Left Sleeve



tel: 608.452.2138

fax: 888.682.6724

toll-free: 800.354.2825