



Thank you for choosing MtBorahCustom.com for your custom shorts design. We have compiled this document to ensure your design process goes smoothly and quickly with our Art Department.

On the following pages, you will find Design Templates for you to use and create your custom design, along with explanations of our margins and design policies. If you have any further questions regarding your design, please don't hesitate to contact our friendly Customer Service Department at 1-800-354-2825.

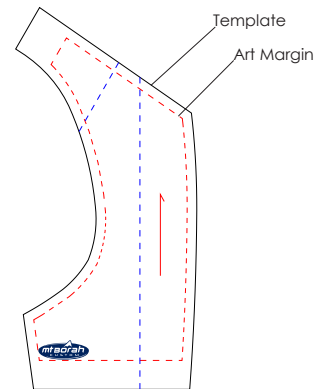
## Men's Cycling Shorts



### Art Margins:

Each piece of your custom shorts design has an Art Margin associated with it. These margins indicate an area that has been reserved for sewing during production of your shorts.

For this reason, Foreground Art (such as logos, text, etc.) is not allowed to exceed these margins. Background Art (secondary design elements, backgrounds, etc.) is allowed to encroach these areas, but it is important to note that a portion of these areas will be cut off and/or sewn up in production.



### A Note About Raster Artwork:

While we do allow raster artwork to be used in your custom shorts design, there are a few stipulations regarding such use:

#### Size/Resolution:

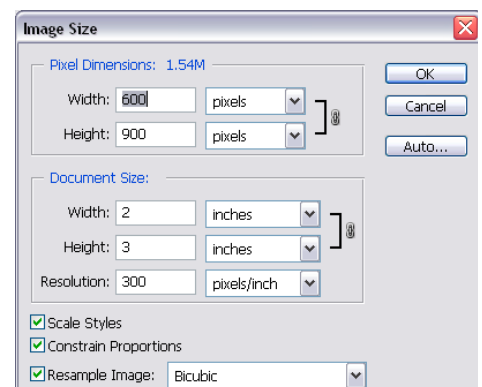
To ensure a quality product, we require all raster artwork to be sent to us at 100% of the final size it is to be used on your design, with a resolution of at least 150 D.P.I.

For instance, if your logo is 2" x 3" @ 72 D.P.I., and you wish to use the logo with a final printed size of 4" x 6", we will not be able to use that file.

If your logo is 2" x 3" @ 300 D.P.I., however, we would then be able to use your file at a size ranging from the original 2" x 3" to 4" x 6" with acceptable results.

#### File Preparation:

Because our Design Templates are shown at a percentage of actual size, we ask that when you design using raster art, please design your shorts to fit our scaled down Design Template, and send us your raster art at full size and resolution separately. Doing so will ensure that your raster art will be usable, and the quality will not be ill-effected by compression or downsampling.





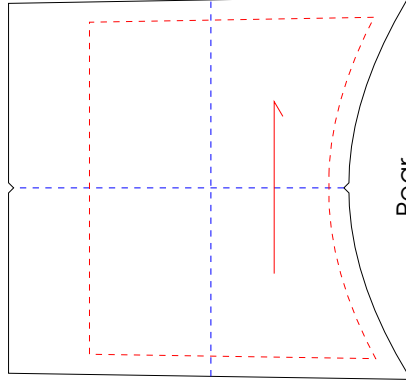
Customer ID: \_\_\_\_\_  
 CSR: \_\_\_\_\_

**NOTE:**  
 Please extend background artwork slightly beyond template lines.

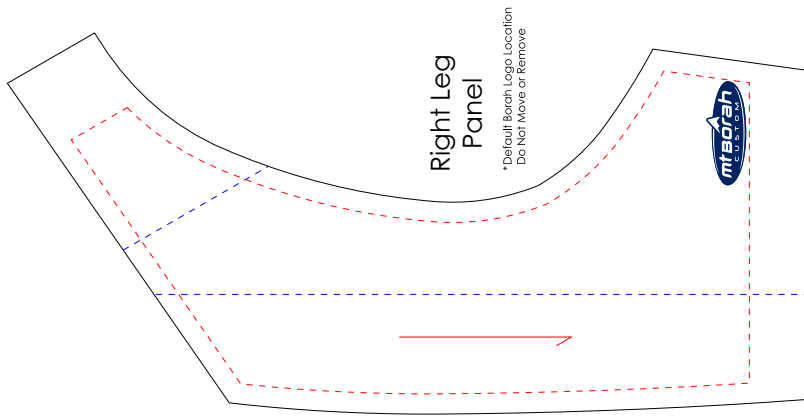
Please keep all logos and text (foreground artwork) within the art margins.

**Art Legend**

Template	
Art Margin	
Art Read Direction	

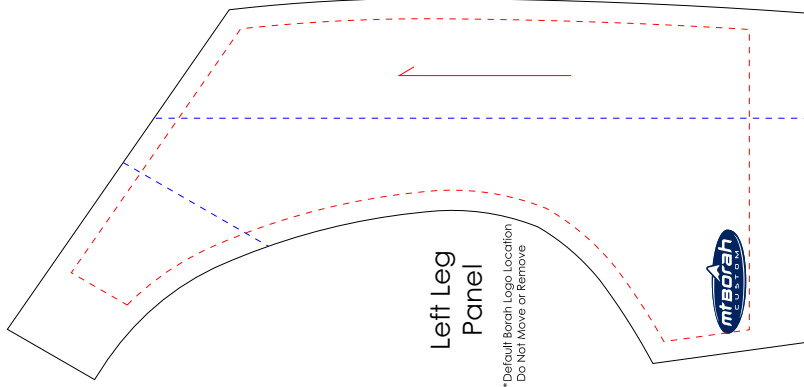


Rear Panel



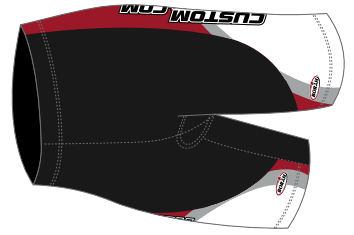
Right Leg Panel

\*Default Borah Logo Location  
 Do Not Move or Remove



Left Leg Panel

\*Default Borah Logo Location  
 Do Not Move or Remove



Front



Back

**mtBORAH**  
 CUSTOM.COM

tel: 608.452.2138

fax: 888.682.6724

toll-free: 800.354.2825